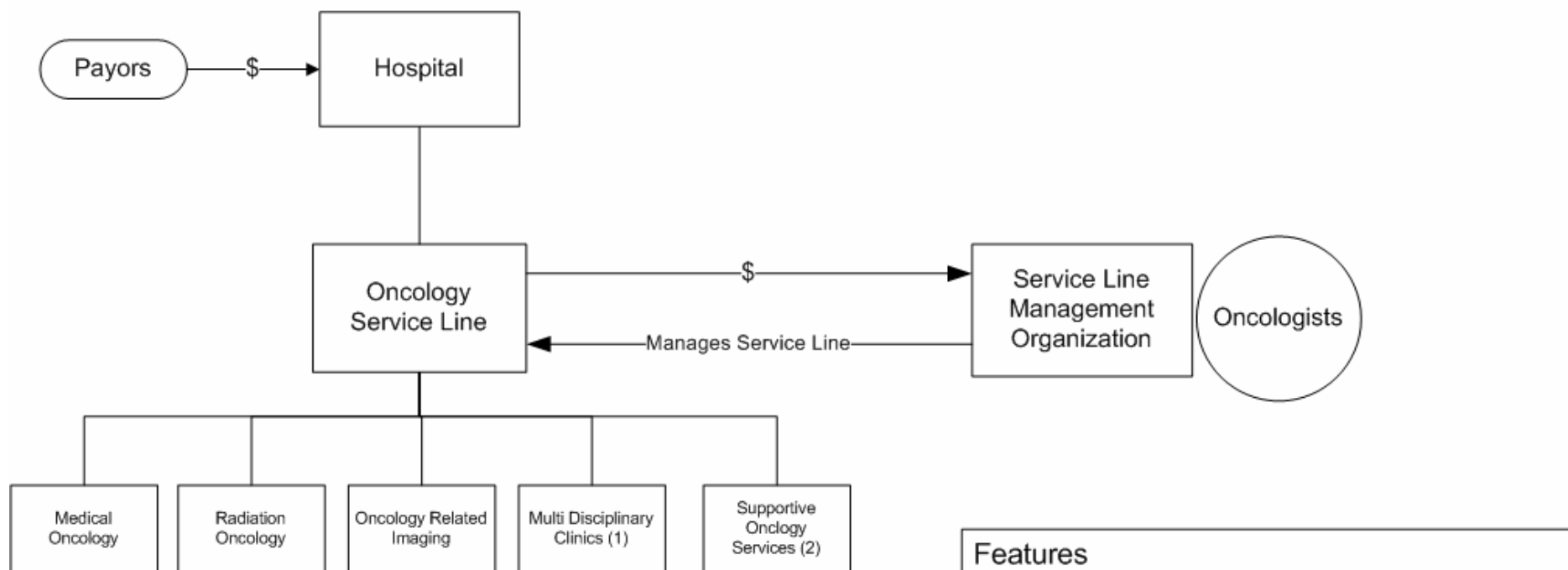


Oncology Service Line Co-Management

Independent management organization which assumes full accountability for the operations of community-wide oncology service line.



Features

- Full accountability for the clinical, programmatic, administrative and marketing functions of the Oncology Service line
- Oncology Service Line Billing and Collections
- Compensation for managing Oncology Service Line covers professional services and administrative expenses

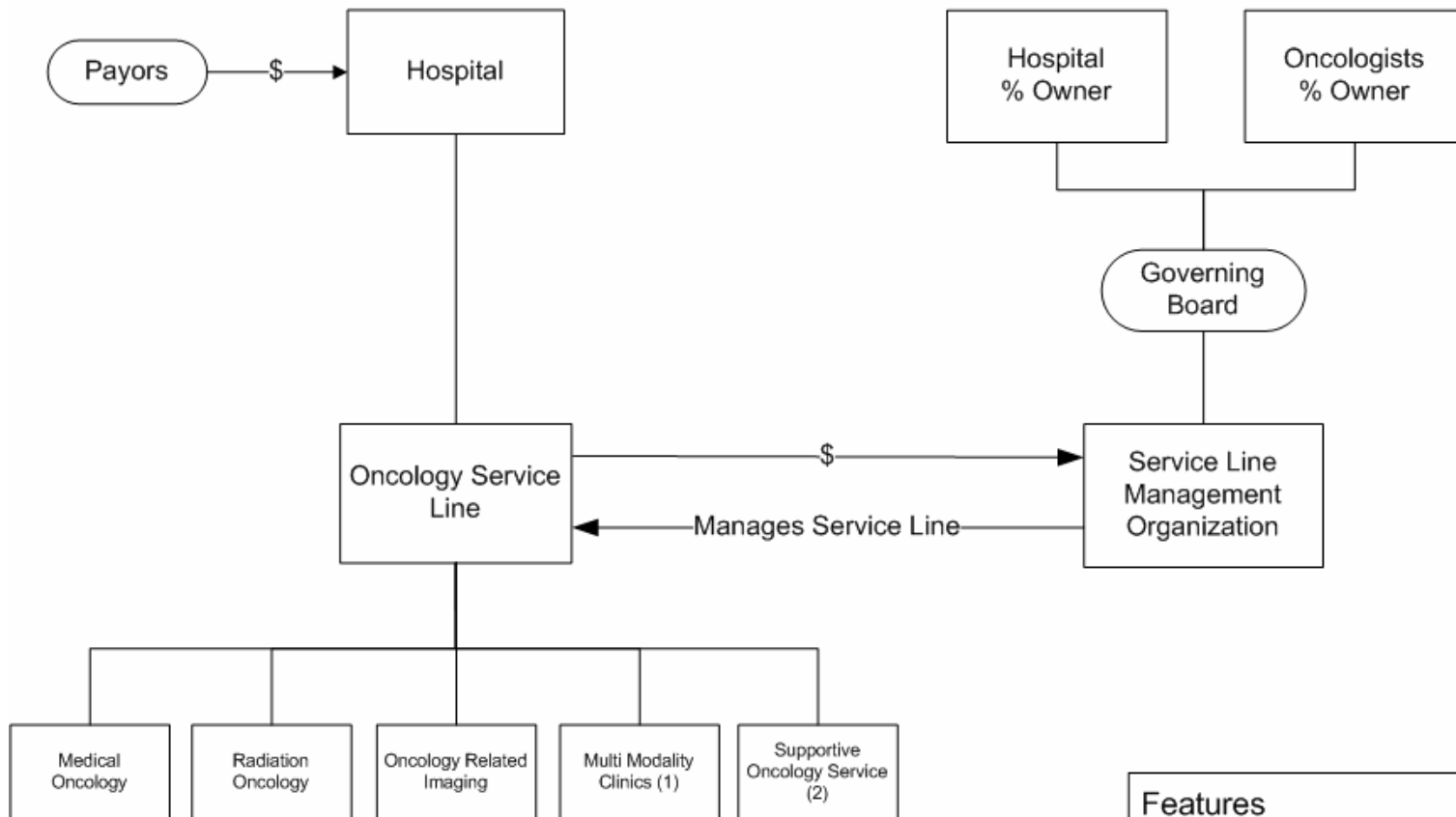
(1) Multi Disciplinary Clinics, such as: Breast, Prostate, GI, Head and Neck, Thoracic, etc.

(2) Supportive Oncology Services, such as: Social Services, Genetic Counseling, Survivorship, Palliative Care, Complementary Therapies, etc.

2/09 DRAFT

Oncology Service Line Co-Management

Independent management organization owned by oncologists and hospital which assumes full accountability for the operations of community-wide oncology service line.



(1) Multi Disciplinary Clinics, such as; Breast, Prostate, GI, Head and Neck, Thoracic, etc.

(2) Supportive Oncology Services, such as; Social Services, Genetic Counseling, Survivorship, Palliative Care, Complementary Therapies, etc.

Features

- Shared Governance
- Compensation for managing Oncology Service Line covers professional services and administrative expenses
- Full accountability for the clinical, programmatic, administrative and marketing functions of the service line
- Oncology Service Line Billing and Collections
- Shared Profits

2/09 DRAFT